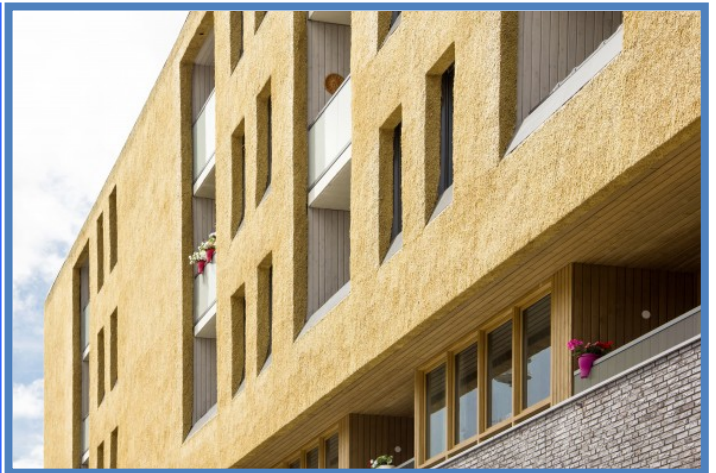


MAGMA FIRESTOP

INNOVATIVE FIRE RETARDANT SOLUTIONS

Thatchprotector SG-2H

The beauty of a Thatched roof is unsurpassed. However Thatched houses are more vulnerable to fire risk than those covered with other materials. This fire risk can be limited by the application of Magma Firestop® Thatchprotector SG-2H and treated roofs do comply with the relevant fire standards for roofing materials.



- Environmental friendly fire protective solution
- Historical identity will be preserved
- Complies with many international fire standards for roofing materials including the European Broof classification according EN 13501-5
- Tested on open and closed building constructions



No Fear No Fire!



Markweg Zuid 27
4794 SN Heijningen
The Netherlands

E info@magma.nl
W www.magma.nl

TRADENAME	MAGMA FIRESTOP® THATCHPROTECTOR no. SG-2H
DESCRIPTION	Waterborne, fire retardant coating for exterior usage
COLOUR	White, non visible after drying
LABOUR CLASSIFICATION	Complies with the Dutch labour standards for professional usage including VOC levels
RECOMMENDED USE	As a fire retardant coating suitable for exterior applications of thatched roofing materials.
FIRE CLASSIFICATION	Various roofing materials treated with this product comply with fire standards like: B Roof EN 13501-5:2006/2009 (Europe), NEN 6063 (Neth.), M1 (Fr), BS 476 p.3 A rating (UK), AS 1530 p.3 (Au).
COVERAGE	Depends on the type, quality and absorbing properties of the materials you like to treat. In general: 0,5 litre per m ² (0,45 Kg. per M ²)
TECHNICAL DATA	
	Density : ± 1,13 kg/dm ³
	pH value : ± 6,8
	VOC content : 52,1 gr/ltr
APPLICATION	
	Dilution: Product is ready-to-use and cannot be diluted with other products and/or water
	Method: Can be applied by spray or dipping applications
	Conditions: Temperature min. 5°C / max. 50°C. RH max. 70%.
	Surface: Clean, dry and free from dirt, dust or oil
	Cleaning: Spoiled product needs to be cleaned direct after application, with warm water and before drying
	General: Before treatment, spray a small sample of the material, where it will not be noticed to ensure the result. When the result is not satisfactory, do not use the product further and contact us
PACKING	25 kg cans
SHELF LIFE	Closed packing, 12 months, when packing has been opened the shelf life is limited to a period of 3-6 months
TRANSPORT & STORAGE	Store the product free from frost, not in direct sunlight, packing well closed and keep away from children and animals
SAFETY	For more information regarding safety, we direct you to our Material Safety Data Sheet
GENERAL	It is important and recommended to take notice of general safety & hygiene precautions also for safe, waterborne chemicals. Do not eat, drink or smoke during application. Do not flush unused chemicals but dispose these in accordance with local waste disposal regulations